

## Atlas® Stainless Steel®



- Designed for Use in Highly Corrosive Solutions
- Stainless Steel Blade Resists Corrosion
- Heavy-Duty Frame Designed for Years of Rugged Use
- All Frames Include a Grounding Strap
- Plumb Bob Must be Ordered Separately
- Recommended Plumb Bob: S590
- Blade Style: D4

Cat. No.	UPC No.	Packaging	Bob Cut	Blade Width	Blade Length	Blade Style	Replacement Blade Cat No.	Product Weight
S1291F590	037103440839	Boxed	590	1/2 in	33 ft	D4	OS1291F590	1.50 lb
S1293F590	037103456823	Boxed	590	1/2 in	50 ft	D4	OS1293F590	2.00 lb

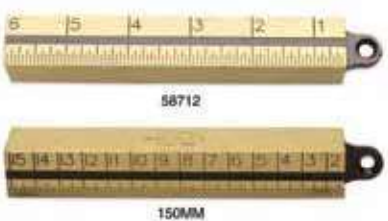
## Inage Oil Gauging Plumb Bobs



- For Use in Heavy Oils
- Cylindrical Shaped
- Tapered Point Tip

Cat. No.	UPC No.	Packaging	Description	Length	Product Weight
590	037103453204	Boxed	20 oz Plumb Bob, Solid Brass Inage, Cylindrical Shape	6.75 in	1.40 lb
590G	037103453235	Boxed	20 oz Plumb Bob, Solid Brass, Graduated in Inches, Blunt Point	6.75 in	1.40 lb
590GM	037103453242	Boxed	20 oz Plumb Bob, Solid Brass, Graduated in Millimeters and Centimeters	6.75 in	1.40 lb
590GME	037103442895	Boxed	20 oz Plumb Bob, Solid Brass, Metric and English	6.75 in	1.40 lb
S590	037103460134	Boxed	20 oz Plumb Bob, Stainless Steel, Cylindrical Shape	6.75 in	1.20 lb

## Outage Oil Gauging Plumb Bob



- Square Shaped Solid Brass Bob
- Eye Milled From Solid Brass Block (Not Removable)
- Zero Falls Inside Top of Hook Eye

Cat. No.	UPC No.	Packaging	Description	Length	Product Weight
58712	037103453181	Boxed	20 oz Plumb Bob, Solid Brass Outage	6 in	1.27 lb
150MM	037103105875	Boxed	570g Plumb Bob, Brass Outage	152 mm	1.27 lb